

An Answer for Millions with Dry Eye

There are nearly 30 million people in the United States and over 300 million worldwide who have been diagnosed with dry eye. Most have learned to live with eye discomfort and have become dependent on drops or other treatment methods that only offer temporary relief. This has been due to a lack of understanding that the root cause of most dry eye is now known to be a chronic and progressive condition, Meibomian Gland Dysfunction or MGD.

**MGD affects
86% of all those
with Dry Eye and
it's treatable.**



Ask your doctor if you have MGD
and if LipiFlow® is right for you.

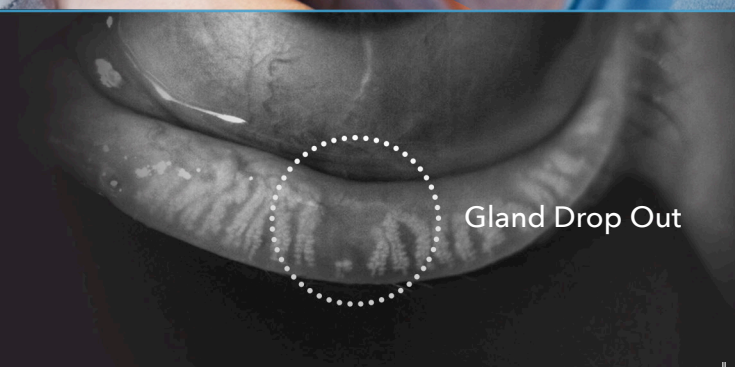
Dry Eye *and* **MGD**
Talk to Your Doctor Today.



Visit lipiflow.com for videos and
to learn more about MGD and the
LipiFlow treatment.

TearScience, Inc.
5151 McCrimmon Parkway, Suite 250
Morrisville, NC 27560
1-855-337-9393

16-ADV-137 A

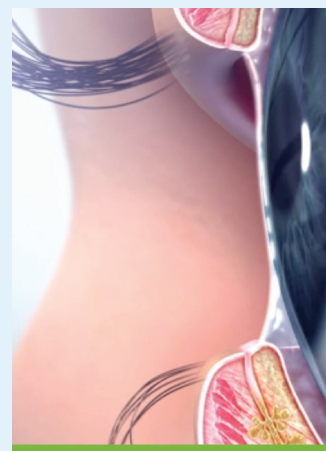


Gland Drop Out

Understanding MGD

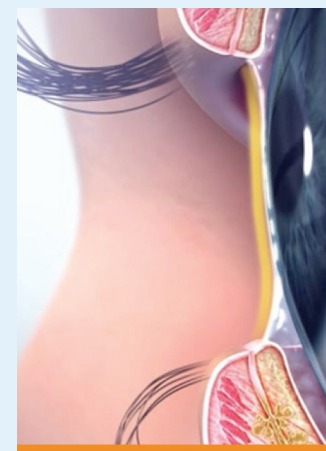
Many commonly attribute their eye discomfort to dry eye, when the root cause of the burning, scratching and redness is most likely MGD.

MGD occurs when there is **compromise to the function and/or structure of the meibomian glands in the eyelids that produce the protective oily layer of the tear film**. This oil helps protect the ocular surface from disease and prevents the watery part of the tears from evaporating when your eyes are open. Without these oils, our eyes become more susceptible to the negative effects that dry climates, air conditioning, computer use, reading and other daily activities can have on the long-term health of our eyes.



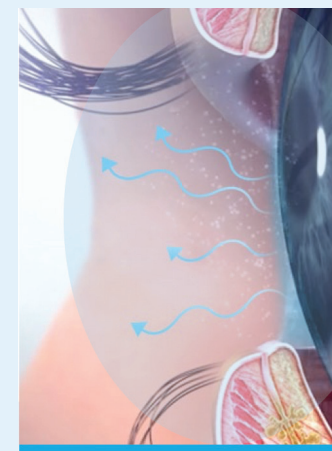
PROTECTIVE WATER LAYER

Produced by the Lacrimal Gland



WATER IS PROTECTED BY OIL

Produced by the Meibomian Glands
Located in the Eyelids



WATER EVAPORATING

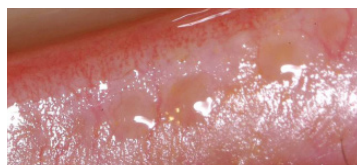
Causing: Redness, Dryness, Irritation,
Burning and Eye Fatigue

MGD Identification

To assess meibomian gland health and to identify MGD, both meibomian gland function and structure are evaluated.

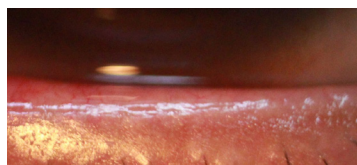
Gland Function

Function is evaluated by assessing how the glands respond to gentle force, approximating that of a deliberate blink. The blink health, which is crucial to maintaining gland function, is assessed by determining the completeness of each blink. Reduced gland function is correlated with symptoms of eye discomfort and eye redness.



**NORMAL
FUNCTIONING
GLANDS**

Liquid Oil

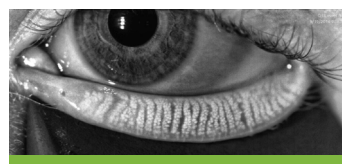


BLOCKED GLANDS

No Oil Secretions

Gland Structure

Structure is observed and captured with high definition gland imaging. Structural compromise, which is otherwise invisible, can be identified and documented with gland imaging. Structural compromise is unlikely to be reversible. Failure to treat obstructed glands is likely to lead to further structural compromise.



**NORMAL GLAND
STRUCTURE**



**SHORTENED GLANDS
AND GLAND LOSS**



**SIGNIFICANT GLAND
LOSS**

Treating MGD with LipiFlow®

While there are multiple choices available for treating MGD, LipiFlow is the only FDA-cleared device for removing gland blockages and restoring gland function. Through advances in the application of Vectored Thermal Pulsation (VTP™) technology, the LipiFlow treatment utilizes a patented algorithm of heat applied to the inner eyelids and massage to remove the obstructions in your meibomian glands.

